



# POINT-BLANK™ Direct Flow Coolant Turning Holder Kits



Leitz Metalworking Technology Group  
**BELIN • BILZ • BOEHLERIT •  
FETTE • KIENINGER • ONSRUD**

**BOEHLERIT**

**FETTE**  
**FETTE**

**BELIN**



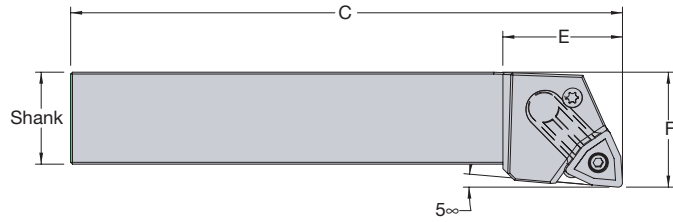
**BILZ**

**ONSRUD**  
Onsrud  
Cutter

**KIENINGER**



**“Point-Blank™” Direct Flow Negative Turning Holders**



Left hand view shown

Description	EDP No.		Shank Width	Shank Height	C	E	F	Shape Insert	Seat	Lock Pin	Pin Wrench	Lock Nozzle Screw
	Right Hand	Left Hand										
MCLNR/L 12-4B DFC	53664	53662	0.75	0.75	4.50	1.25	1.00	CNM_ 43	ICSN 432	NL 46	54151	TS35.6-9M1
MCLNR/L 16-4D DFC	53665	53663	1.00	1.00	6.00	1.25	1.25	CNM_ 43	ICSN 432	NL 46	54151	TS35.6-9M1
MDJNR/L 12-3B DFC	53669	53666	0.75	0.75	4.50	1.25	1.00	DNM_ 33	IDSN 322	NL 34L	54152	TS35.6-9M1
MDJNR/L 12-4B DFC	53670	53667	0.75	0.75	4.50	1.25	1.00	DNM_ 43	IDSN 433	NL 46	54151	TS35.6-9M1
MDJNR/L 16-4D DFC	53671	53668	1.00	1.00	6.00	1.25	1.25	DNM_ 43	IDSN 433	NL 46	54151	TS35.6-9M1
MTJNR/L 12-3B DFC	53675	53672	0.75	0.75	4.50	1.25	1.00	TNM_ 33	ITSN 332	NL 34L	54152	TS35.6-9M1
MTJNR/L 16-3D DFC	53676	53673	1.00	1.00	6.00	1.25	1.25	TNM_ 43	ITSN 433	NL 46	54151	TS35.6-9M1
MTJNR/L 16-4D DFC	53677	53674	1.00	1.00	6.00	1.25	1.25	TNM_ 43	ITSN 433	NL 46	54151	TS35.6-9M1
MVJNR/L 12-3B DFC	53681	53678	0.75	0.75	4.50	1.25	1.00	VNM_ 32	IVNS 322	NL 34L	54152	TS35.6-9M1
MVJNR/L 16-3D DFC	53682	53680	1.00	1.00	6.00	1.25	1.25	VNM_ 33	IVSN 322	NL 34L	54152	TS35.6-9M1
MWLNR/L 12-3B DFC	53686	53683	0.75	0.75	4.50	1.25	1.00	WNM_ 33	IWSN 322	NL 34L	54152	TS35.6-9M1
MWLNR/L 12-4B DFC	53687	53684	0.75	0.75	4.50	1.25	1.00	WNM_ 43	IWSN 432	NL 46	54151	TS35.6-9M1
MWLNR/L 16-3D DFC	55516	55517	1.00	1.00	6.00	1.25	1.25	WNM_ 33	IWSN 322	NL 34L	54152	TS35.6-9M1
MWLNR/L 16-4D DFC	53688	53685	1.00	1.00	6.00	1.25	1.25	WNM_ 43	IWSN 433	NL 46	54151	TS35.6-9M1
MCLNR/L 20-5D DFC	54995	55965	1.25	1.25	6.00	1.38	1.50	CNM_ 54	ICSN 533	NL 58		TS35.6-9M1
MCLNR/L 24-6D DFC	55008	55974	1.50	1.50	7.00	1.50	2.00	CNM_ 64	ICSN 633	NL 68		TS35.6-9M1

For turning inserts, please refer to our Turning Catalog, pages 18–46.

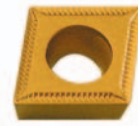
**“Point-Blank™” Direct Flow Positive Turning Holders**

Description	EDP No.		Shank Width	Shank Height	C	E	F	Shape Insert	Shim No.	Shim Filler Screw	Insert Screw	Lock Nozzle Screw
	Right Hand	Left Hand										
SCLCR/L 12-3B DFC	55494	10577	0.750	0.750	4.5	0.690	1.000	CCMT 3(2.5)_	55799	55825	55823	TS35.6-9M1
SCLCR/L 16-3D DFC	10580	10581	1.000	1.000	6.0	0.690	1.250	CCMT 3(2.5)_	55799	55825	55823	TS35.6-9M1
SDJCR/L 12-3B DFC	10584	10585	0.750	0.750	4.5	1.000	1.000	DCMT 3(2.5)_	55826	55825	55823	TS35.6-9M1
SDJCR/L 16-3D DFC	10882	10883	1.000	1.000	6.0	1.000	1.000	DCMT 3(2.5)_	55826	55825	55823	TS35.6-9M1
SVJCR/L 12-3B DFC	10886	10887	0.750	0.750	4.5	1.250	1.000	VCMT 33_	55827	55825	55823	TS35.6-9M1
SVJCR/L 16-3D DFC	10890	10891	1.000	1.000	6.0	1.250	1.250	VCMT 33_	55827	55825	55823	TS35.6-9M1

**NEW**

Kit Number	Holder Number	Holder Description	Insert Number	Insert Grade	Insert Chip-breaker	List Price
PPB-SF-1	SCLCR-123B	3/4" R.H. for CCMT3(2.5)1	CCMT3(2.5)1	LC215B	BSF	\$139.00
PPB-SF-2	SCLCL-123B	3/4" L.H. for CCMT3(2.5)1	CCMT3(2.5)1	LC215B	BSF	139.00
PPB-SF-3	SCLCR-163D	1" R.H. for CCMT3(2.5)1	CCMT3(2.5)1	LC215B	BSF	139.00
PPB-SF-4	SCLCL-163D	1" L.H. for CCMT3(2.5)1	CCMT3(2.5)1	LC215B	BSF	139.00
PPB-SF-5	SDJCR-123B	3/4" R.H. for DCMT3(2.5)1	DCMT3(2.5)1	LC215B	BSF	149.00
PPB-SF-6	SDJCL-123B	3/4" L.H. for DCMT3(2.5)1	DCMT3(2.5)1	LC215B	BSF	149.00
PPB-SF-7	SDJCR-163D	1" R.H. for DCMT3(2.5)1	DCMT3(2.5)1	LC215B	BSF	149.00
PPB-SF-8	SDJCL-163D	1" L.H. for DCMT3(2.5)1	DCMT3(2.5)1	LC215B	BSF	149.00
PPB-SF-9	SVJCR-123B	3/4" R.H. for VCMT332	VCMT331	LC215B	BSF	159.00
PPB-SF-10	SVJCL-123B	3/4" L.H. for VCMT332	VCMT331	LC215B	BSF	159.00
PPB-SF-11	SVJCR-163D	1" R.H. for VCMT332	VCMT331	LC215B	BSF	159.00
PPB-SF-12	SVJCL-163D	1" L.H. for VCMT332	VCMT331	LC215B	BSF	159.00

### BSF Steel Finishing Geometry



- Chipbreaker BSF
- DOC/Feed  
 $a_p = .010" - .080"$   
 $f = .002" - .010"$

**NEW**

Kit Number	Holder Number	Holder Description	Insert Number	Insert Grade	Insert Chip-breaker	List Price
PPB-SM-1	SCLCR-123B	3/4" R.H. for CCMT3(2.5)1	CCMT3(2.5)2	LC225C	BSM	\$139.00
PPB-SM-2	SCLCL-123B	3/4" L.H. for CCMT3(2.5)1	CCMT3(2.5)2	LC225C	BSM	139.00
PPB-SM-3	SCLCR-163D	1" R.H. for CCMT3(2.5)1	CCMT3(2.5)2	LC225C	BSM	139.00
PPB-SM-4	SCLCL-163D	1" L.H. for CCMT3(2.5)1	CCMT3(2.5)2	LC225C	BSM	139.00
PPB-SM-5	SDJCR-123B	3/4" R.H. for DCMT3(2.5)1	DCMT3(2.5)2	LC225C	BSM	149.00
PPB-SM-6	SDJCL-123B	3/4" L.H. for DCMT3(2.5)1	DCMT3(2.5)2	LC225C	BSM	149.00
PPB-SM-7	SDJCR-163D	1" R.H. for DCMT3(2.5)1	DCMT3(2.5)2	LC225C	BSM	149.00
PPB-SM-8	SDJCL-163D	1" L.H. for DCMT3(2.5)1	DCMT3(2.5)2	LC225C	BSM	149.00
PPB-SM-9	SVJCR-123B	3/4" R.H. for VCMT332	VCMT332	LC225C	BSM	159.00
PPB-SM-10	SVJCL-123B	3/4" L.H. for VCMT332	VCMT332	LC225C	BSM	159.00
PPB-SM-11	SVJCR-163D	1" R.H. for VCMT332	VCMT332	LC225C	BSM	159.00
PPB-SM-12	SVJCL-163D	1" L.H. for VCMT332	VCMT332	LC225C	BSM	159.00

### BSM Steel Medium Geometry



- Chipbreaker BSM
- DOC/Feed  
 $a_p = .020" - .157"$   
 $f = .006" - .018"$

**NEW**

Kit Number	Holder Number	Holder Description	Insert Number	Insert Grade	Insert Chip-breaker	List Price
PPB-SSF-1	SCLCR-123B	3/4" R.H. for CCMT3(2.5)1	CCMT3(2.5)1	LC435D	BSMS	\$139.00
PPB-SSF-2	SCLCL-123B	3/4" L.H. for CCMT3(2.5)1	CCMT3(2.5)1	LC435D	BSMS	139.00
PPB-SSF-3	SCLCR-163D	1" R.H. for CCMT3(2.5)1	CCMT3(2.5)1	LC435D	BSMS	139.00
PPB-SSF-4	SCLCL-163D	1" L.H. for CCMT3(2.5)1	CCMT3(2.5)1	LC435D	BSMS	139.00
PPB-SSF-5	SDJCR-123B	3/4" R.H. for DCMT3(2.5)1	DCMT3(2.5)1	LC435D	BSMS	149.00
PPB-SSF-6	SDJCL-123B	3/4" L.H. for DCMT3(2.5)1	DCMT3(2.5)1	LC435D	BSMS	149.00
PPB-SSF-7	SDJCR-163D	1" R.H. for DCMT3(2.5)1	DCMT3(2.5)1	LC435D	BSMS	149.00
PPB-SSF-8	SDJCL-163D	1" L.H. for DCMT3(2.5)1	DCMT3(2.5)1	LC435D	BSMS	149.00
PPB-SSF-9	SVJCR-123B	3/4" R.H. for VCMT332	VCMT331	LC435D	BSMS	159.00
PPB-SSF-10	SVJCL-123B	3/4" L.H. for VCMT332	VCMT331	LC435D	BSMS	159.00
PPB-SSF-11	SVJCR-163D	1" R.H. for VCMT332	VCMT331	LC435D	BSMS	159.00
PPB-SSF-12	SVJCL-163D	1" L.H. for VCMT332	VCMT331	LC435D	BSMS	159.00

### BSMS Stainless Steel Medium Geometry



- Chipbreaker BSMS
- DOC/Feed  
 $a_p = .008 - .250"$   
 $f = .005" - .020"$

**NEW**

Kit Number	Holder Number	Holder Description	Insert Number	Insert Grade	Insert Chip-breaker	List Price
PPB-SSM-1	SCLCR-123B	3/4" R.H. for CCMT3(2.5)1	CCMT3(2.5)2	LC435D	BSMS	\$139.00
PPB-SSM-2	SCLCL-123B	3/4" L.H. for CCMT3(2.5)1	CCMT3(2.5)2	LC435D	BSMS	139.00
PPB-SSM-3	SCLCR-163D	1" R.H. for CCMT3(2.5)1	CCMT3(2.5)2	LC435D	BSMS	139.00
PPB-SSM-4	SCLCL-163D	1" L.H. for CCMT3(2.5)1	CCMT3(2.5)2	LC435D	BSMS	139.00
PPB-SSM-5	SDJCR-123B	3/4" R.H. for DCMT3(2.5)1	DCMT3(2.5)2	LC435D	BSMS	149.00
PPB-SSM-6	SDJCL-123B	3/4" L.H. for DCMT3(2.5)1	DCMT3(2.5)2	LC435D	BSMS	149.00
PPB-SSM-7	SDJCR-163D	1" R.H. for DCMT3(2.5)1	DCMT3(2.5)2	LC435D	BSMS	149.00
PPB-SSM-8	SDJCL-163D	1" L.H. for DCMT3(2.5)1	DCMT3(2.5)2	LC435D	BSMS	149.00
PPB-SSM-9	SVJCR-123B	3/4" R.H. for VCMT332	VCMT332	LC435D	BSMS	159.00
PPB-SSM-10	SVJCL-123B	3/4" L.H. for VCMT332	VCMT332	LC435D	BSMS	159.00
PPB-SSM-11	SVJCR-163D	1" R.H. for VCMT332	VCMT332	LC435D	BSMS	159.00
PPB-SSM-12	SVJCL-163D	1" L.H. for VCMT332	VCMT332	LC435D	BSMS	159.00

### BSMS Stainless Steel Medium Geometry



- Chipbreaker  
BSMS

- DOC/Feed

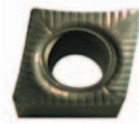
$$a_p = .008 - .250"$$

$$f = .005" - .020"$$

**NEW**

Kit Number	Holder Number	Holder Description	Insert Number	Insert Grade	Insert Chip-breaker	List Price
PPB-AF-1	SCLCR-123B	3/4" R.H. for CCMT3(2.5)1	CCGT3(2.5)1	LW610	BAL	\$149.00
PPB-AF-2	SCLCL-123B	3/4" L.H. for CCMT3(2.5)1	CCGT3(2.5)1	LW610	BAL	149.00
PPB-AF-3	SCLCR-163D	1" R.H. for CCMT3(2.5)1	CCGT3(2.5)1	LW610	BAL	149.00
PPB-AF-4	SCLCL-163D	1" L.H. for CCMT3(2.5)1	CCGT3(2.5)1	LW610	BAL	149.00
PPB-AF-5	SDJCR-123B	3/4" R.H. for DCMT3(2.5)1	DCGT3(2.5)1	LW610	BAL	159.00
PPB-AF-6	SDJCL-123B	3/4" L.H. for DCMT3(2.5)1	DCGT3(2.5)1	LW610	BAL	159.00
PPB-AF-7	SDJCR-163D	1" R.H. for DCMT3(2.5)1	DCGT3(2.5)1	LW610	BAL	159.00
PPB-AF-8	SDJCL-163D	1" L.H. for DCMT3(2.5)1	DCGT3(2.5)1	LW610	BAL	159.00
PPB-AF-9	SVJCR-123B	3/4" R.H. for VCMT332	VCGT331	LW610	BAL	169.00
PPB-AF-10	SVJCL-123B	3/4" L.H. for VCMT332	VCGT331	LW610	BAL	169.00
PPB-AF-11	SVJCR-163D	1" R.H. for VCMT332	VCGT331	LW610	BAL	169.00
PPB-AF-12	SVJCL-163D	1" L.H. for VCMT332	VCGT331	LW610	BAL	169.00

### BAL Aluminum Medium Geometry



- Chipbreaker  
BAL

- DOC/Feed

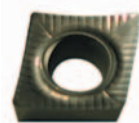
$$a_p = .010 - .250"$$

$$f = .003" - .280"$$

**NEW**

Kit Number	Holder Number	Holder Description	Insert Number	Insert Grade	Insert Chip-breaker	List Price
PPB-AM-1	SCLCR-123B	3/4" R.H. for CCMT3(2.5)1	CCGT3(2.5)2	LW610	BAL	\$149.00
PPB-AM-2	SCLCL-123B	3/4" L.H. for CCMT3(2.5)1	CCGT3(2.5)2	LW610	BAL	149.00
PPB-AM-3	SCLCR-163D	1" R.H. for CCMT3(2.5)1	CCGT3(2.5)2	LW610	BAL	149.00
PPB-AM-4	SCLCL-163D	1" L.H. for CCMT3(2.5)1	CCGT3(2.5)2	LW610	BAL	149.00
PPB-AM-5	SDJCR-123B	3/4" R.H. for DCMT3(2.5)1	DCGT3(2.5)2	LW610	BAL	159.00
PPB-AM-6	SDJCL-123B	3/4" L.H. for DCMT3(2.5)1	DCGT3(2.5)2	LW610	BAL	159.00
PPB-AM-7	SDJCR-163D	1" R.H. for DCMT3(2.5)1	DCGT3(2.5)2	LW610	BAL	159.00
PPB-AM-8	SDJCL-163D	1" L.H. for DCMT3(2.5)1	DCGT3(2.5)2	LW610	BAL	159.00
PPB-AM-9	SVJCR-123B	3/4" R.H. for VCMT332	VCGT332	LW610	BAL	169.00
PPB-AM-10	SVJCL-123B	3/4" L.H. for VCMT332	VCGT332	LW610	BAL	169.00
PPB-AM-11	SVJCR-163D	1" R.H. for VCMT332	VCGT332	LW610	BAL	169.00
PPB-AM-12	SVJCL-163D	1" L.H. for VCMT332	VCGT332	LW610	BAL	169.00

### BAL Aluminum Medium Geometry



- Chipbreaker  
BAL

- DOC/Feed

$$a_p = .010 - .250"$$

$$f = .003" - .280"$$

Kit Number	Holder Number	Holder Description	Insert Number	Insert Grade	Insert Chip-breaker	List Price
PB-1-SF	MCLNR-124B	3/4" R.H. for CNMG432	CNMG432	LC215B	BF	\$139.00
PB-2-SF	MCLNL-124B	3/4" L.H. for CNMG432	CNMG432	LC215B	BF	139.00
PB-3-SF	MCLNR-164D	1" R.H. for CNMG432	CNMG432	LC215B	BF	139.00
PB-4-SF	MCLNL-164D	1" L.H. for CNMG432	CNMG432	LC215B	BF	139.00
PB-5-SF	MDJNR-123B	3/4" R.H. for DNMG332	DNMG332	LC215B	BF	159.00
PB-6-SF	MDJNL-123B	3/4" L.H. for DNMG332	DNMG332	LC215B	BF	159.00
PB-7-SF	MDJNR-124B	3/4" R.H. for DNMG432	DNMG432	LC215B	BF	159.00
PB-8-SF	MDJNL-124B	3/4" L.H. for DNMG432	DNMG432	LC215B	BF	159.00
PB-9-SF	MDJNR-164D	1" R.H. for DNMG432	DNMG432	LC215B	BF	169.00
PB-10-SF	MDJNL-164D	1" L.H. for DNMG432	DNMG432	LC215B	BF	169.00
PB-11-SF	MTJNR-123B	3/4" R.H. for TNMG331	TNMG331	LC215B	BF	139.00
PB-12-SF	MTJNL-123B	3/4" L.H. for TNMG331	TNMG331	LC215B	BF	139.00
PB-13-SF	MTJNR-163D	1" R.H. for TNMG331	TNMG331	LC215B	BF	139.00
PB-14-SF	MTJNL-163D	1" L.H. for TNMG331	TNMG331	LC215B	BF	139.00
PB-15-SF	MTJNR-164D	1" R.H. for TNMG432	TNMG432	LC215B	BM	149.00
PB-16-SF	MTJNL-164D	1" L.H. for TNMG432	TNMG432	LC215B	BM	149.00
PB-17-SF	MVJNR-123B	3/4" R.H. for VNMG332	VNMG331	LC215B	BF	179.00
PB-18-SF	MVJNL-123B	3/4" L.H. for VNMG332	VNMG331	LC215B	BF	179.00
PB-19-SF	MVJNR-163D	1" R.H. for VNMG332	VNMG331	LC215B	BF	179.00
PB-20-SF	MVJNL-163D	1" L.H. for VNMG332	VNMG331	LC215B	BF	179.00
PB-21-SF	MWLNR-123B	3/4" R.H. for WNMG332	WNMG332	LC215B	BF	149.00
PB-22-SF	MWLNL-123B	3/4" L.H. for WNMG332	WNMG332	LC215B	BF	149.00
PB-23-SF	MWLNR-124B	3/4" R.H. for WNMG432	WNMG432	LC215B	BF	149.00
PB-24-SF	MWLNL-124B	3/4" L.H. for WNMG432	WNMG432	LC215B	BF	149.00
PB-25-SF	MWLNR-164D	1" R.H. for WNMG432	WNMG432	LC215B	BF	149.00
PB-26-SF	MWLNL-164D	1" L.H. for WNMG432	WNMG432	LC215B	BF	149.00

### BF Steel Finishing Geometry



- **Chipbreaker**  
BF
- **DOC/Feed**  
a<sub>p</sub> = .005–.080  
f = .002–.008
- **Application**  
Finishing  
Chip Control  
Light DOC

Kit Number	Holder Number	Holder Description	Insert Number	Insert Grade	Insert Chip-breaker	List Price
PB-1-SM	MCLNR-124B	3/4" R.H. for CNMG432	CNMG432	LC225C	BM	\$139.00
PB-2-SM	MCLNL-124B	3/4" L.H. for CNMG432	CNMG432	LC225C	BM	139.00
PB-3-SM	MCLNR-164D	1" R.H. for CNMG432	CNMG432	LC225C	BM	139.00
PB-4-SM	MCLNL-164D	1" L.H. for CNMG432	CNMG432	LC225C	BM	139.00
PB-5-SM	MDJNR-123B	3/4" R.H. for DNMG332	DNMG332	LC225C	BM	159.00
PB-6-SM	MDJNL-123B	3/4" L.H. for DNMG332	DNMG332	LC225C	BM	159.00
PB-7-SM	MDJNR-124B	3/4" R.H. for DNMG432	DNMG432	LC225C	BM	159.00
PB-8-SM	MDJNL-124B	3/4" L.H. for DNMG432	DNMG432	LC225C	BM	159.00
PB-9-SM	MDJNR-164D	1" R.H. for DNMG432	DNMG432	LC225C	BM	169.00
PB-10-SM	MDJNL-164D	1" L.H. for DNMG432	DNMG432	LC225C	BM	169.00
PB-11-SM	MTJNR-123B	3/4" R.H. for TNMG332	TNMG332	LC225C	BM	139.00
PB-12-SM	MTJNL-123B	3/4" L.H. for TNMG332	TNMG332	LC225C	BM	139.00
PB-13-SM	MTJNR-163D	1" R.H. for TNMG332	TNMG332	LC225C	BM	139.00
PB-14-SM	MTJNL-163D	1" L.H. for TNMG332	TNMG332	LC225C	BM	139.00
PB-15-SM	MTJNR-164D	1" R.H. for TNMG432	TNMG432	LC225C	BM	149.00
PB-16-SM	MTJNL-164D	1" L.H. for TNMG432	TNMG432	LC225C	BM	149.00
PB-17-SM	MVJNR-123B	3/4" R.H. for VNMG332	VNMG332	LC225C	BM	179.00
PB-18-SM	MVJNL-123B	3/4" L.H. for VNMG332	VNMG332	LC225C	BM	179.00
PB-19-SM	MVJNR-163D	1" R.H. for VNMG332	VNMG332	LC225C	BM	179.00
PB-20-SM	MVJNL-163D	1" L.H. for VNMG332	VNMG332	LC225C	BM	179.00
PB-21-SM	MWLNR-123B	3/4" R.H. for WNMG332	WNMG332	LC225C	BM	149.00
PB-22-SM	MWLNL-123B	3/4" L.H. for WNMG332	WNMG332	LC225C	BM	149.00
PB-23-SM	MWLNR-124B	3/4" R.H. for WNMG432	WNMG432	LC225C	BM	149.00
PB-24-SM	MWLNL-124B	3/4" L.H. for WNMG432	WNMG432	LC225C	BM	149.00
PB-25-SM	MWLNR-164D	1" R.H. for WNMG432	WNMG432	LC225C	BM	149.00
PB-26-SM	MWLNL-164D	1" L.H. for WNMG432	WNMG432	LC225C	BM	149.00
<b>NEW</b> PB-27-SM	MCLNR-205D	1-1/4" R.H. for CNMG543	CNMG543	LC225C	BM	159.00
<b>NEW</b> PB-28-SM	MCLNL-205D	1-1/4" L.H. for CNMG543	CNMG543	LC225C	BM	159.00
<b>NEW</b> PB-29-SM	MCLNR-246E	1-1/2" R.H. for CNMG643	CNMG643	LC225C	BM	169.00
<b>NEW</b> PB-30-SM	MCLNL-246E	1-1/2" L.H. for CNMG643	CNMG643	LC225C	BM	169.00

### BM Steel Medium Geometry



- **Chipbreaker**  
BM

- **DOC/Feed**  
a<sub>p</sub> = .030-.315  
f = .006-.020

- **Application**  
Medium Machining

Kit Number	Holder Number	Holder Description	Insert Number	Insert Grade	Insert Chip-breaker	List Price
PB-1-SR	MCLNR-124B	3/4" R.H. for CNMG432	CNMG432	LC235C	BMR	\$139.00
PB-2-SR	MCLNL-124B	3/4" L.H. for CNMG432	CNMG432	LC235C	BMR	139.00
PB-3-SR	MCLNR-164D	1" R.H. for CNMG432	CNMG432	LC235C	BMR	139.00
PB-4-SR	MCLNL-164D	1" L.H. for CNMG432	CNMG432	LC235C	BMR	139.00
PB-5-SR	MDJNR-123B	3/4" R.H. for DNMG332	DNMG332	LC235C	BM	159.00
PB-6-SR	MDJNL-123B	3/4" L.H. for DNMG332	DNMG332	LC235C	BM	159.00
PB-7-SR	MDJNR-124B	3/4" R.H. for DNMG432	DNMG432	LC235C	BMR	159.00
PB-8-SR	MDJNL-124B	3/4" L.H. for DNMG432	DNMG432	LC235C	BMR	159.00
PB-9-SR	MDJNR-164D	1" R.H. for DNMG432	DNMG432	LC235C	BMR	169.00
PB-10-SR	MDJNL-164D	1" L.H. for DNMG432	DNMG432	LC235C	BMR	169.00
PB-11-SR	MTJNR-123B	3/4" R.H. for TNMG332	TNMG332	LC235C	BMR	139.00
PB-12-SR	MTJNL-123B	3/4" L.H. for TNMG332	TNMG332	LC235C	BMR	139.00
PB-13-SR	MTJNR-163D	1" R.H. for TNMG332	TNMG332	LC235C	BMR	139.00
PB-14-SR	MTJNL-163D	1" L.H. for TNMG332	TNMG332	LC235C	BMR	139.00
PB-15-SR	MTJNR-164D	1" R.H. for TNMG432	TNMG433	LC235C	BMR	149.00
PB-16-SR	MTJNL-164D	1" L.H. for TNMG432	TNMG433	LC235C	BMR	149.00
PB-17-SR	MVJNR-123B	3/4" R.H. for VNMG332	VNMG332	LC235C	BM	179.00
PB-18-SR	MVJNL-123B	3/4" L.H. for VNMG332	VNMG332	LC235C	BM	179.00
PB-19-SR	MVJNR-163D	1" R.H. for VNMG332	VNMG332	LC235C	BM	179.00
PB-20-SR	MVJNL-163D	1" L.H. for VNMG332	VNMG332	LC235C	BM	179.00
PB-21-SR	MWLNR-123B	3/4" R.H. for WNMG332	WNMG332	LC235C	BM	149.00
PB-22-SR	MWLNL-123B	3/4" L.H. for WNMG332	WNMG332	LC235C	BM	149.00
PB-23-SR	MWLNR-124B	3/4" R.H. for WNMG432	WNMG432	LC235C	BMR	149.00
PB-24-SR	MWLNL-124B	3/4" L.H. for WNMG432	WNMG432	LC235C	BMR	149.00
PB-25-SR	MWLNR-164D	1" R.H. for WNMG432	WNMG432	LC235C	BMR	149.00
PB-26-SR	MWLNL-164D	1" L.H. for WNMG432	WNMG432	LC235C	BMR	149.00
<b>NEW</b> PB-27-SR	MCLNR-205D	1-1/4" R.H. for CNMG543	CNMG543	LC235C	BMR	159.00
<b>NEW</b> PB-28-SR	MCLNL-205D	1-1/4" L.H. for CNMG543	CNMG543	LC235C	BMR	159.00
<b>NEW</b> PB-29-SR	MCLNR-246E	1-1/2" R.H. for CNMG643	CNMG643	LC235C	BMR	169.00
<b>NEW</b> PB-30-SR	MCLNL-246E	1-1/2" L.H. for CNMG643	CNMG643	LC235C	BMR	169.00

### BMR Steel Roughing Geometry



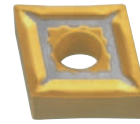
- **Chipbreaker**  
BMR
- **DOC/Feed**  
a<sub>p</sub> = .047–.315  
f = .012–.040
- **Application**  
Roughing  
Heavy Feeds

**NEW**  
**NEW**  
**NEW**  
**NEW**



Kit Number	Holder Number	Holder Description	Insert Number	Insert Grade	Insert Chip-breaker	List Price
PB-1-SSF	MCLNR-124B	3/4" R.H. for CNMG432	CNMG432	LC435D	BFMS	\$139.00
PB-2-SSF	MCLNL-124B	3/4" L.H. for CNMG432	CNMG432	LC435D	BFMS	139.00
PB-3-SSF	MCLNR-164D	1" R.H. for CNMG432	CNMG432	LC435D	BFMS	139.00
PB-4-SSF	MCLNL-164D	1" L.H. for CNMG432	CNMG432	LC435D	BFMS	139.00
PB-5-SSF	MDJNR-123B	3/4" R.H. for DNMG332	DNMG332	LC235C	BFM	159.00
PB-6-SSF	MDJNL-123B	3/4" L.H. for DNMG332	DNMG332	LC235C	BFM	159.00
PB-7-SSF	MDJNR-124B	3/4" R.H. for DNMG432	DNMG432	LC435D	BFMS	159.00
PB-8-SSF	MDJNL-124B	3/4" L.H. for DNMG432	DNMG432	LC435D	BFMS	159.00
PB-9-SSF	MDJNR-164D	1" R.H. for DNMG432	DNMG432	LC435D	BFMS	169.00
PB-10-SSF	MDJNL-164D	1" L.H. for DNMG432	DNMG432	LC435D	BFMS	169.00
PB-11-SSF	MTJNR-123B	3/4" R.H. for TNMG332	TNMG332	LC435D	BFMS	139.00
PB-12-SSF	MTJNL-123B	3/4" L.H. for TNMG332	TNMG332	LC435D	BFMS	139.00
PB-13-SSF	MTJNR-163D	1" R.H. for TNMG332	TNMG332	LC435D	BFMS	139.00
PB-14-SSF	MTJNL-163D	1" L.H. for TNMG332	TNMG332	LC435D	BFMS	139.00
PB-15-SSF	MTJNR-164D	1" R.H. for TNMG432	TNMG432	LC235C	BM	149.00
PB-16-SSF	MTJNL-164D	1" L.H. for TNMG432	TNMG432	LC235C	BM	149.00
PB-17-SSF	MVJNR-123B	3/4" R.H. for VNMG332	VNMG332	LC235C	BM	179.00
PB-18-SSF	MVJNL-123B	3/4" L.H. for VNMG332	VNMG332	LC235C	BM	179.00
PB-19-SSF	MVJNR-163D	1" R.H. for VNMG332	VNMG332	LC235C	BM	179.00
PB-20-SSF	MVJNL-163D	1" L.H. for VNMG332	VNMG332	LC235C	BM	179.00
PB-21-SSF	MWLNR-123B	3/4" R.H. for WNMG331	WNMG331	LC435D	BFMS	149.00
PB-22-SSF	MWLNL-123B	3/4" L.H. for WNMG331	WNMG331	LC435D	BFMS	149.00
PB-23-SSF	MWLNR-124B	3/4" R.H. for WNMG432	WNMG432	LC435D	BFMS	149.00
PB-24-SSF	MWLNL-124B	3/4" L.H. for WNMG432	WNMG432	LC435D	BFMS	149.00
PB-25-SSF	MWLNR-164D	1" R.H. for WNMG432	WNMG432	LC435D	BFMS	149.00
PB-26-SSF	MWLNL-164D	1" L.H. for WNMG432	WNMG432	LC435D	BFMS	149.00

### BFMS Stainless Finishing Geometry



- **Chipbreaker**  
BFMS

- **DOC/Feed**  
a<sub>p</sub> = .020–.125  
f = .003–.013

- **Application**  
Finishing  
Chip Control  
Light DOC

Kit Number	Holder Number	Holder Description	Insert Number	Insert Grade	Insert Chip-breaker	List Price
PB-1-SSM	MCLNR-124B	3/4" R.H. for CNMG432	CNMG432	LC435D	BMS	\$139.00
PB-2-SSM	MCLNL-124B	3/4" L.H. for CNMG432	CNMG432	LC435D	BMS	139.00
PB-3-SSM	MCLNR-164D	1" R.H. for CNMG432	CNMG432	LC435D	BMS	139.00
PB-4-SSM	MCLNL-164D	1" L.H. for CNMG432	CNMG432	LC435D	BMS	139.00
PB-5-SSM	MDJNR-123B	3/4" R.H. for DNMG332	DNMG332	LC435D	BMS	159.00
PB-6-SSM	MDJNL-123B	3/4" L.H. for DNMG332	DNMG332	LC435D	BMS	159.00
PB-7-SSM	MDJNR-124B	3/4" R.H. for DNMG432	DNMG432	LC435D	BMS	159.00
PB-8-SSM	MDJNL-124B	3/4" L.H. for DNMG432	DNMG432	LC435D	BMS	159.00
PB-9-SSM	MDJNR-164D	1" R.H. for DNMG432	DNMG432	LC435D	BMS	169.00
PB-10-SSM	MDJNL-164D	1" L.H. for DNMG432	DNMG432	LC435D	BMS	169.00
PB-11-SSM	MTJNR-123B	3/4" R.H. for TNMG332	TNMG332	LC435D	BMS	139.00
PB-12-SSM	MTJNL-123B	3/4" L.H. for TNMG332	TNMG332	LC435D	BMS	139.00
PB-13-SSM	MTJNR-163D	1" R.H. for TNMG332	TNMG332	LC435D	BMS	139.00
PB-14-SSM	MTJNL-163D	1" L.H. for TNMG332	TNMG332	LC435D	BMS	139.00
PB-15-SSM	MTJNR-164D	1" R.H. for TNMG432	TNMG432	LC435D	BMS	149.00
PB-16-SSM	MTJNL-164D	1" L.H. for TNMG432	TNMG432	LC435D	BMS	149.00
PB-17-SSM	MVJNR-123B	3/4" R.H. for VNMG332	VNMG332	LC235C	BM	179.00
PB-18-SSM	MVJNL-123B	3/4" L.H. for VNMG332	VNMG332	LC235C	BM	179.00
PB-19-SSM	MVJNR-163D	1" R.H. for VNMG332	VNMG332	LC235C	BM	179.00
PB-20-SSM	MVJNL-163D	1" L.H. for VNMG332	VNMG332	LC235C	BM	179.00
PB-21-SSM	MWLNR-123B	3/4" R.H. for WNMG332	WNMG332	LC435D	BMS	149.00
PB-22-SSM	MWLNL-123B	3/4" L.H. for WNMG332	WNMG332	LC435D	BMS	149.00
PB-23-SSM	MWLNR-124B	3/4" R.H. for WNMG432	WNMG432	LC435D	BMS	149.00
PB-24-SSM	MWLNL-124B	3/4" L.H. for WNMG432	WNMG432	LC435D	BMS	149.00
PB-25-SSM	MWLNR-164D	1" R.H. for WNMG432	WNMG432	LC435D	BMS	149.00
PB-26-SSM	MWLNL-164D	1" L.H. for WNMG432	WNMG432	LC435D	BMS	149.00
<b>NEW</b> PB-27-SSM	MCLNR-205D	1-1/4" R.H. for CNMG543	CNMG543	LC435D	BMS	159.00
<b>NEW</b> PB-28-SSM	MCLNL-205D	1-1/4" L.H. for CNMG543	CNMG543	LC435D	BMS	159.00
<b>NEW</b> PB-29-SSM	MCLNR-246E	1-1/2" R.H. for CNMG643	CNMG643	LC435D	BMS	169.00
<b>NEW</b> PB-30-SSM	MCLNL-246E	1-1/2" L.H. for CNMG643	CNMG643	LC435D	BMS	169.00

### BMS Stainless Medium Geometry



- **Chipbreaker**  
BMS
- **DOC/Feed**  
a<sub>p</sub> = .047–.200  
f = .006–.016
- **Application**  
Medium Machining

Kit Number	Holder Number	Holder Description	Insert Number	Insert Grade	Insert Chip-breaker	List Price
PB-1-SSR	MCLNR-124B	3/4" R.H. for CNMG432	CNMG432	LC435D	BMRS	\$139.00
PB-2-SSR	MCLNL-124B	3/4" L.H. for CNMG432	CNMG432	LC435D	BMRS	139.00
PB-3-SSR	MCLNR-164D	1" R.H. for CNMG432	CNMG432	LC435D	BMRS	139.00
PB-4-SSR	MCLNL-164D	1" L.H. for CNMG432	CNMG432	LC435D	BMRS	139.00
PB-5-SSR	MDJNR-123B	3/4" R.H. for DNMG332	DNMG332	LC435D	BMS	159.00
PB-6-SSR	MDJNL-123B	3/4" L.H. for DNMG332	DNMG332	LC435D	BMS	159.00
PB-7-SSR	MDJNR-124B	3/4" R.H. for DNMG432	DNMG432	LC435D	BMRS	159.00
PB-8-SSR	MDJNL-124B	3/4" L.H. for DNMG432	DNMG432	LC435D	BMRS	159.00
PB-9-SSR	MDJNR-164D	1" R.H. for DNMG432	DNMG432	LC435D	BMRS	169.00
PB-10-SSR	MDJNL-164D	1" L.H. for DNMG432	DNMG432	LC435D	BMRS	169.00
PB-11-SSR	MTJNR-123B	3/4" R.H. for TNMG332	TNMG332	LC435D	BMS	139.00
PB-12-SSR	MTJNL-123B	3/4" L.H. for TNMG332	TNMG332	LC435D	BMS	139.00
PB-13-SSR	MTJNR-163D	1" R.H. for TNMG332	TNMG332	LC435D	BMS	139.00
PB-14-SSR	MTJNL-163D	1" L.H. for TNMG332	TNMG332	LC435D	BMS	139.00
PB-15-SSR	MTJNR-164D	1" R.H. for TNMG432	TNMG432	LC435D	BMS	149.00
PB-16-SSR	MTJNL-164D	1" L.H. for TNMG432	TNMG432	LC435D	BMS	149.00
PB-17-SSR	MVJNR-123B	3/4" R.H. for VNMG332	VNMG332	LC235C	BM	179.00
PB-18-SSR	MVJNL-123B	3/4" L.H. for VNMG332	VNMG332	LC235C	BM	179.00
PB-19-SSR	MVJNR-163D	1" R.H. for VNMG332	VNMG332	LC235C	BM	179.00
PB-20-SSR	MVJNL-163D	1" L.H. for VNMG332	VNMG332	LC235C	BM	179.00
PB-21-SSR	MWLNR-123B	3/4" R.H. for WNMG332	WNMG332	LC435D	BMS	149.00
PB-22-SSR	MWLNL-123B	3/4" L.H. for WNMG332	WNMG332	LC435D	BMS	149.00
PB-23-SSR	MWLNR-124B	3/4" R.H. for WNMG432	WNMG432	LC435D	BMS	149.00
PB-24-SSR	MWLNL-124B	3/4" L.H. for WNMG432	WNMG432	LC435D	BMS	149.00
PB-25-SSR	MWLNR-164D	1" R.H. for WNMG432	WNMG432	LC435D	BMS	149.00
PB-26-SSR	MWLNL-164D	1" L.H. for WNMG432	WNMG432	LC435D	BMS	149.00
<b>NEW</b> PB-27-SSR	MCLNR-205D	1-1/4" R.H. for CNMG543	CNMG543	LC435D	BMRS	159.00
<b>NEW</b> PB-28-SSR	MCLNL-205D	1-1/4" L.H. for CNMG543	CNMG543	LC435D	BMRS	159.00
<b>NEW</b> PB-29-SSR	MCLNR-246E	1-1/2" R.H. for CNMG643	CNMG643	LC435D	BMRS	169.00
<b>NEW</b> PB-30-SSR	MCLNL-246E	1-1/2" L.H. for CNMG643	CNMG643	LC435D	BMRS	169.00

### BMRS Stainless Roughing Geometry



- **Chipbreaker**  
BMRS

- **DOC/Feed**  
a<sub>p</sub> = .047–.315  
f = .013–.031

- **Application**  
Roughing  
Heavy Feeds



**LMT-FETTE, INC.**

18013 Cleveland Parkway

Suite 180

Cleveland, Ohio 44135

Toll-Free 800-225-0852 or

Direct 216-377-6130

E-mail: [lmfette@lmfette.com](mailto:lmfette@lmfette.com)

Internet: [www.lmfette.com](http://www.lmfette.com)